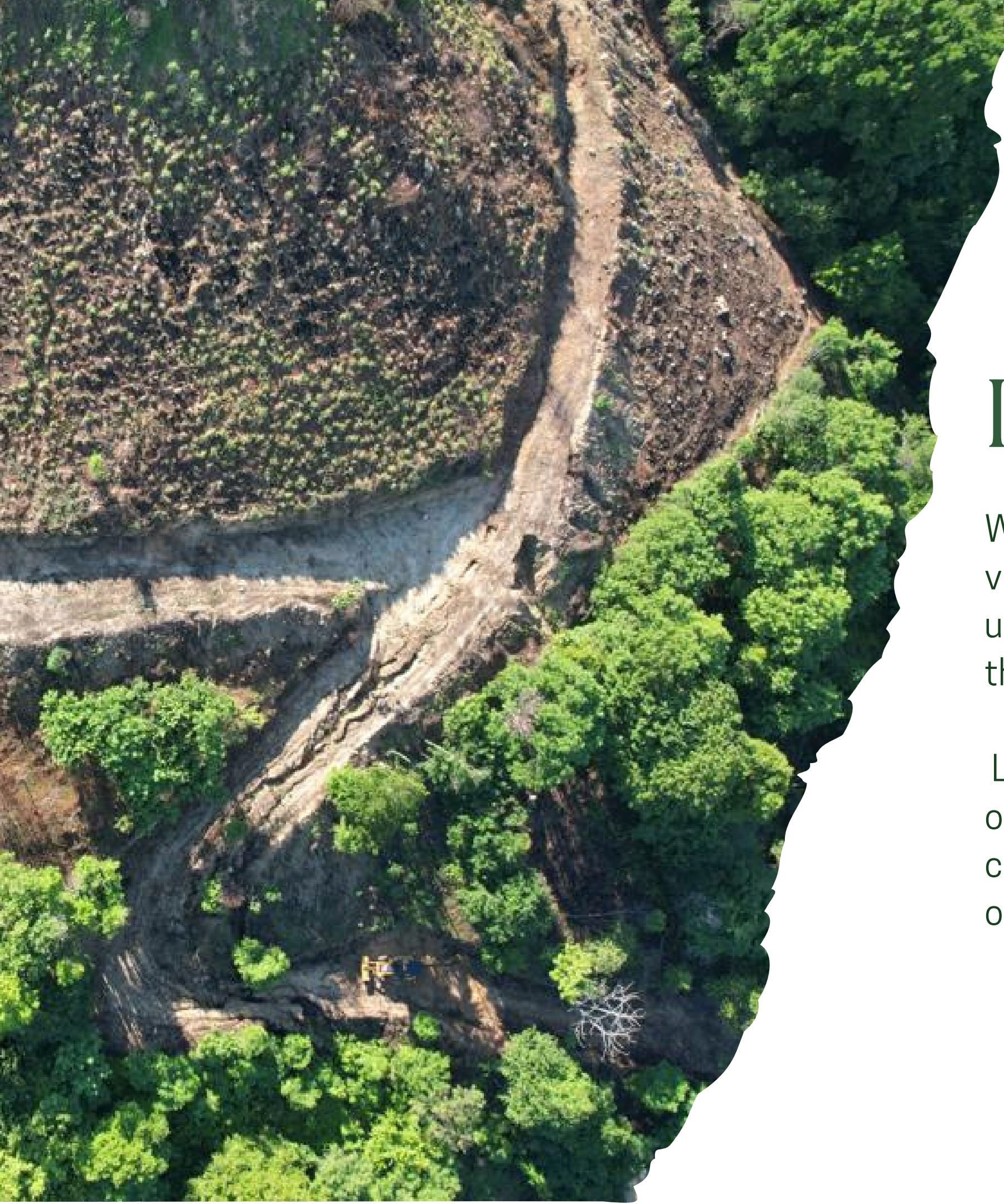


CHILA HILLS LAND DEVELOPMENT

Oaxaca, México





Introduction

Welcome to Chila, a natural gem which offers breathtaking panoramic views. If you've ever dreamt of owning a piece of paradise, this is your unique opportunity to invest on Chila, where the beauty of nature meets the charm of the sea.

Located in the coast of Oaxaca, this mountain offers an exclusive opportunity of belonging to a community immersed in mezcal and mexican culture. We have lots for purchase only 10 minutes from the airport, and overlooking the ocean.

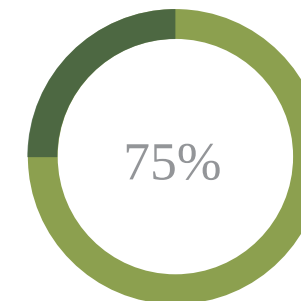
Why invest in the oaxacan Coast?



At least 16%
return on
investment



\$1,731 MXN AVERAGE
DAILY RATE



75% Occupancy rate
(November 2022 - July
2023)



\$605,000 MXN
Average annual income
(annualized)

Oaxacan Coast

The Oaxacan coast started to trend in 2020.

Being still on a developing stage the real estate market in Puerto Escondido presents interesting opportunities which offer big ROIs with a low investment.



Reasons to Invest in Chila

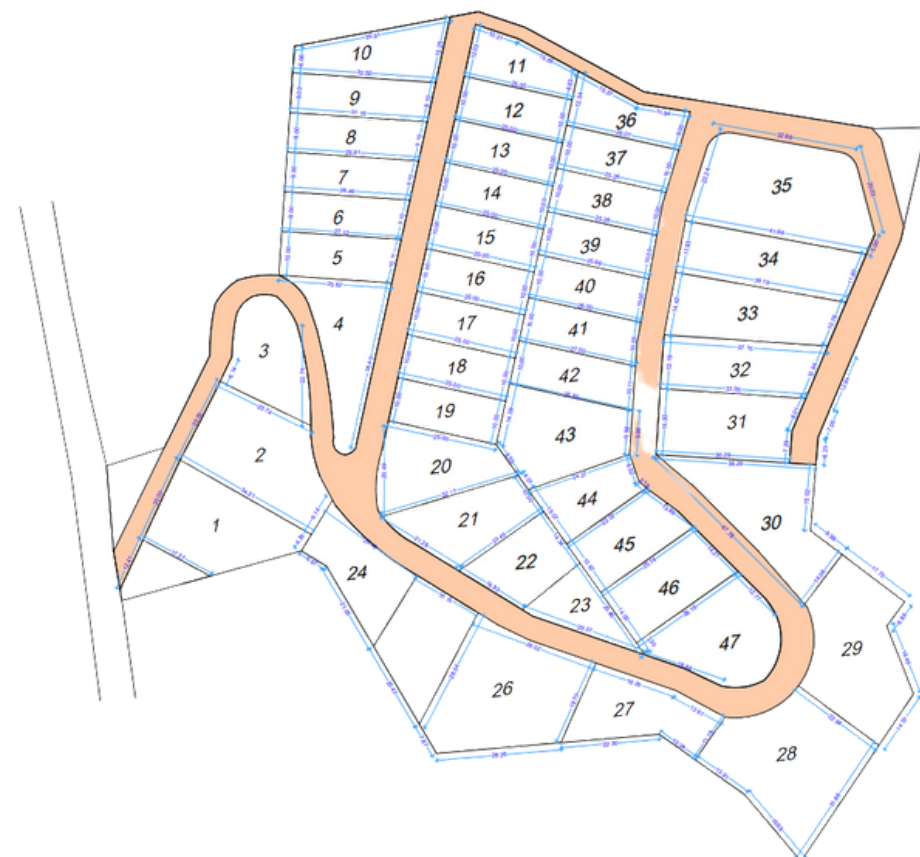
- The steady growth of tourism in Oaxaca boosts demand for properties in this region.
- Connection with Nature: Live in harmony surrounded by the mountains and the ocean.
- Exclusivity and Privacy: A place where you can escape the hustle of everyday life.
- Breathtaking Views: Sunsets over the ocean become a daily spectacle that will never cease to amaze you.
- Infrastructure Investment: Increased tourist interest and visitor influx have led to investments in infrastructure, such as hotels, restaurants, and services.
- Investment of 2.2M MXN for construction of a road on the mountain, as well as the cleaning and harvesting of maguey trees during September.



The Project

CHILA HILLS LAND DEVELOPMENT

- 47 lots
- Located in Puerto Escondido, Oaxaca
- **34** Lots available at Pre-Sale price



Location

- Located in Puerto Escondido, Oaxaca
- 10 min distance from Puerto Escondido International Airport (45 min flight from Mexico City)

Price lists

LOT	Size (m²)	Price per m² (mxp)	Total price	Status		LOT	Size (m²)	Price per m² (mxp)	Total price	Status
1	538.6	2500	1346500	available		25	400	2500	1000000	sold
2	632.9	2500	1582250	available		26	800	2500	2000000	sold
3	383.3	2500	958250	available		27	420	2500	1050000	available
4	461.3	2500	1153250	available		28	820.05	2500	2050125	available
5	263.6	2500	659000	available		29	681.3	2500	1703250	available
6	250.2	2500	625500	available		30	603.8	2500	1509500	available
7	260.1	2500	650250	available		31	463.3	2500	1158250	sold
8	274.3	2500	685750	available		32	427	2500	1067500	sold
9	286.4	2500	716000	available		33	472.1	2500	1180250	sold
10	350.55	2500	876375	available		34	474.1	2500	1185250	sold
11	246.7	2500	616750	available		35	832	2500	2020000	sold
12	250	2500	625000	sold		36	250	2500	625000	available
13	250	2500	625000	sold		37	250	2500	625000	available
14	250	2500	625000	sold		38	250	2500	625000	available
15	250	2500	625000	sold		39	250	2500	625000	sold
16	250	2500	625000	sold		40	250	2500	625000	available
17	250	2500	625000	available		41	250	2500	625000	available
18	250	2500	625000	available		42	250	2500	625000	available
19	250	2500	625000	available		43	489.6	2500	1224000	available
20	424.7	2500	1061750	available		44	265	2500	662500	available
21	400.3	2500	1000750	available		45	324.35	2500	810875	available
22	302	2500	755000	available		46	377.3	2500	943250	available
23	222	2500	555000	available		47	512.3	2500	1280750	available
24	390.5	2500	976250	available						


For Sale


Lots starting at \$625,000 MXN 250m2



Contact

 vince@oxacalandco.com

 +52 55 1830 6401

 www.oxacalandco.com

 @oxacalandco

Oaxaca, México